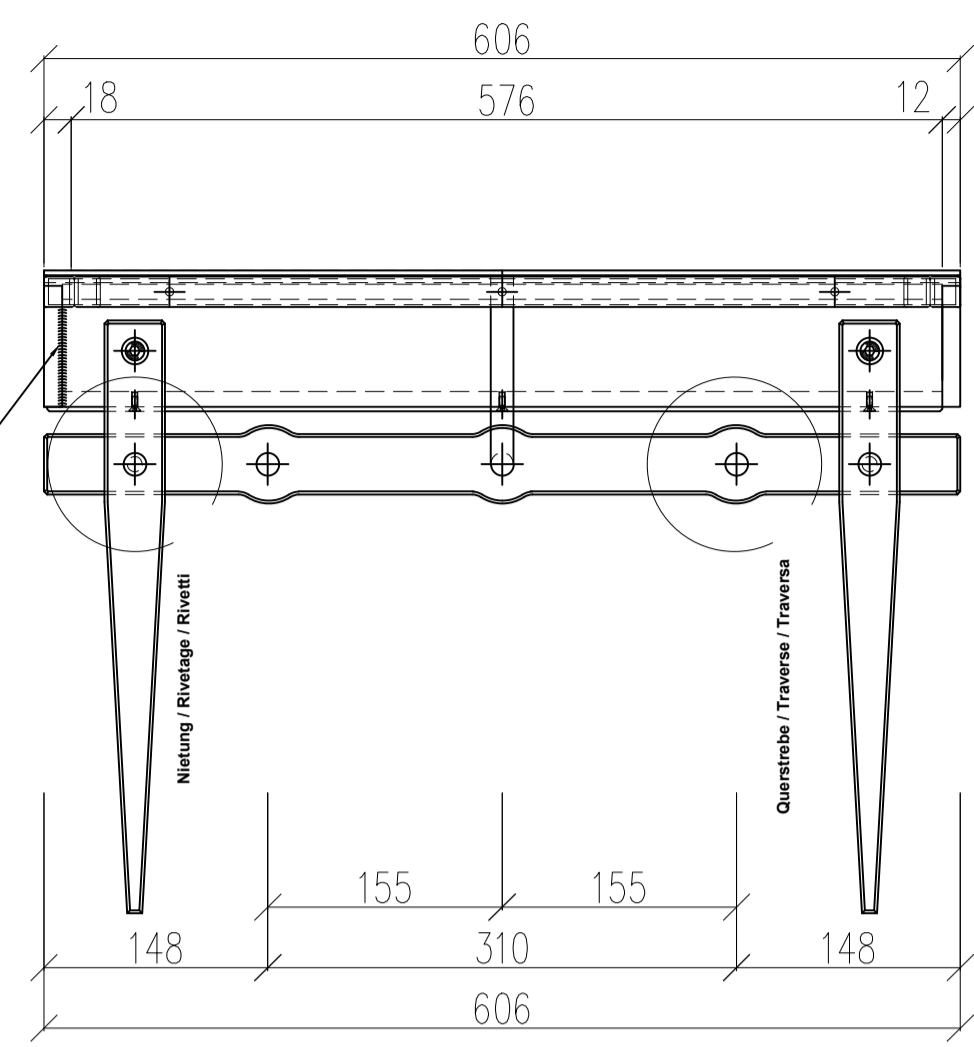
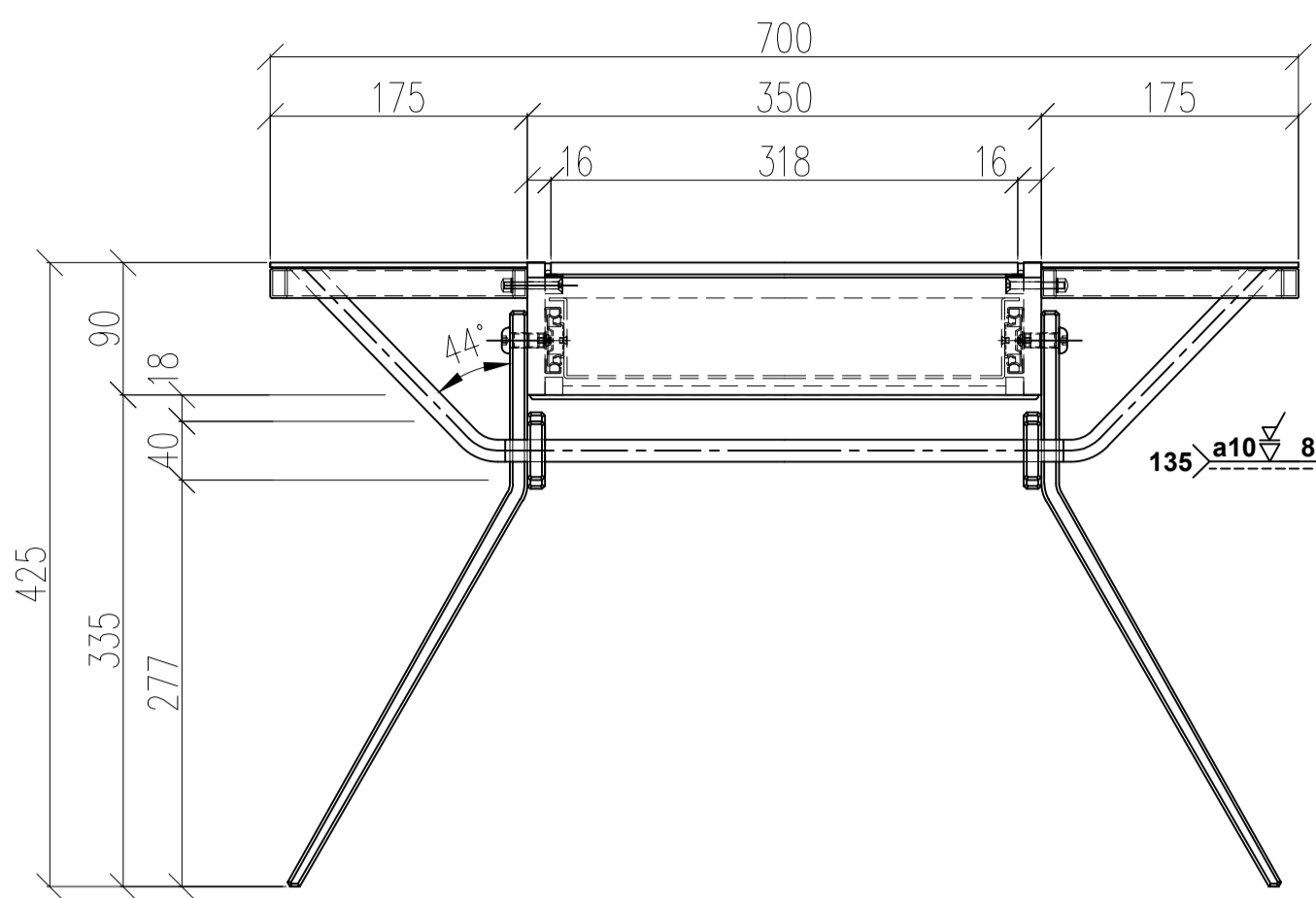
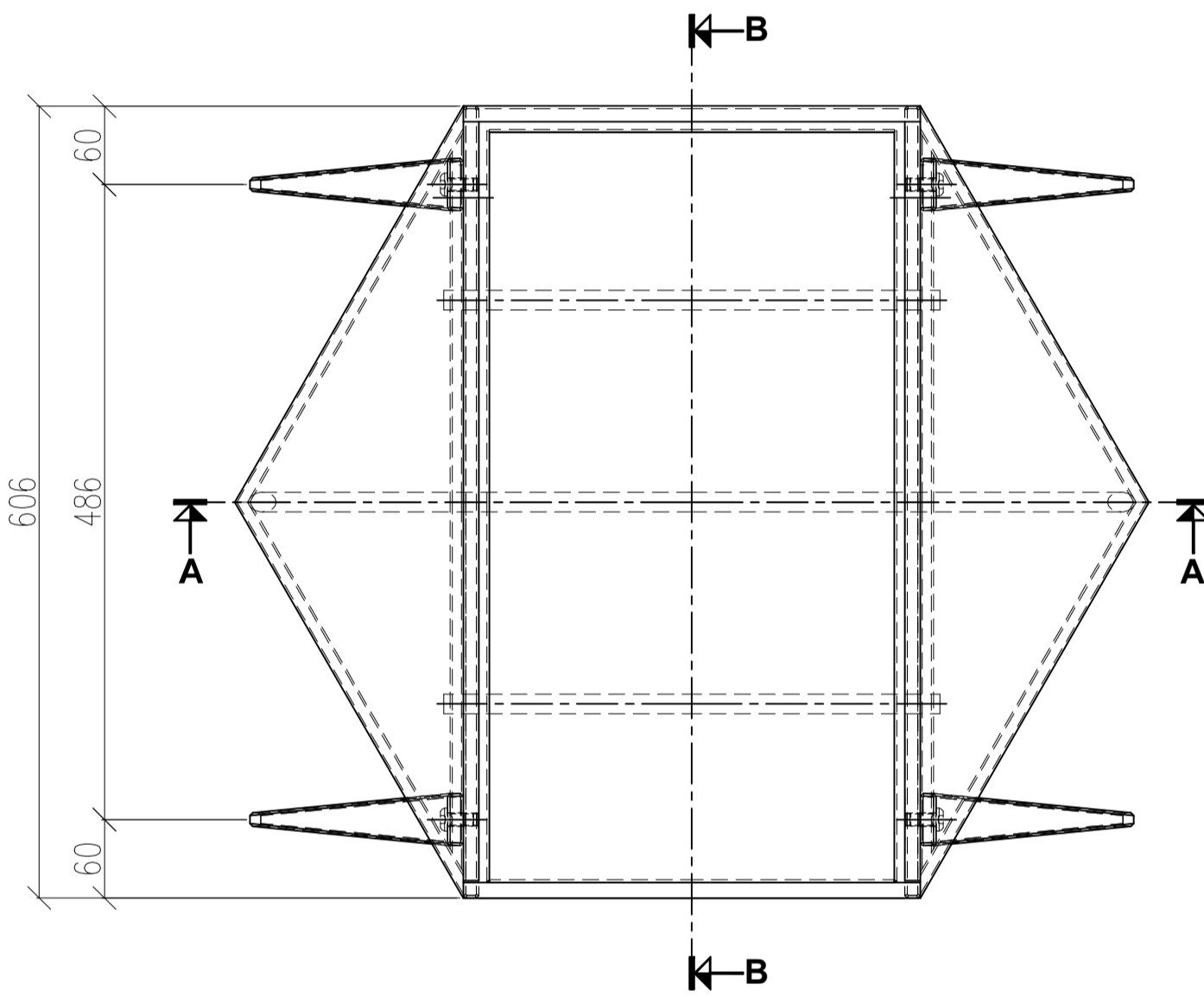
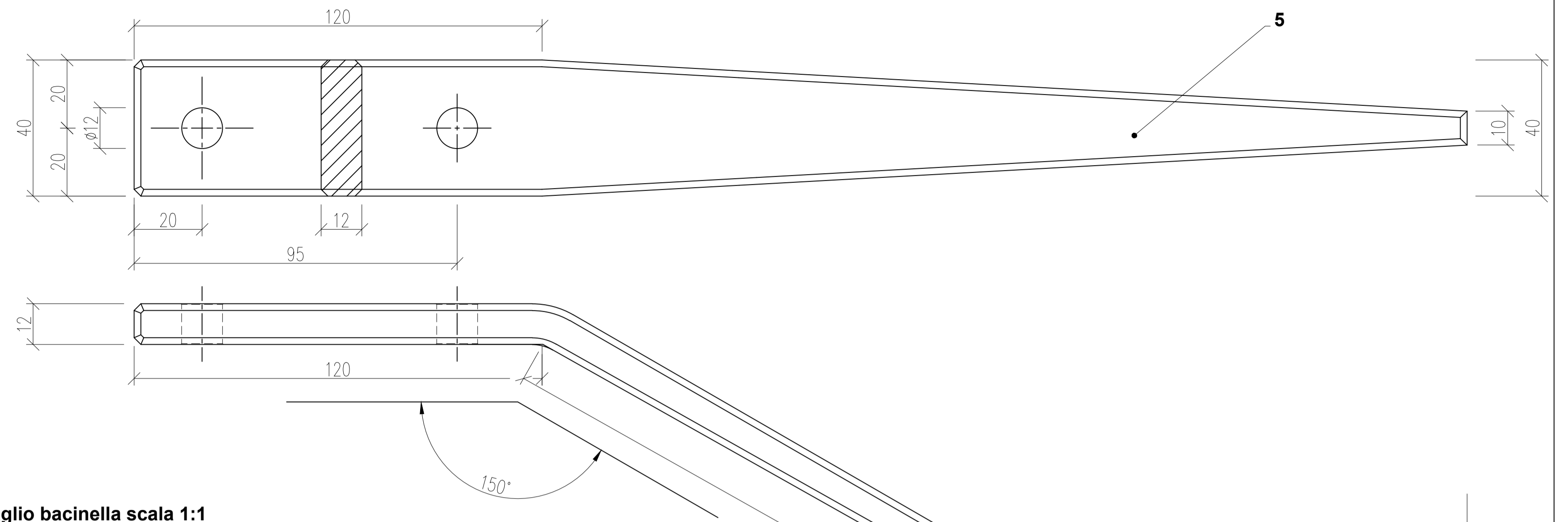


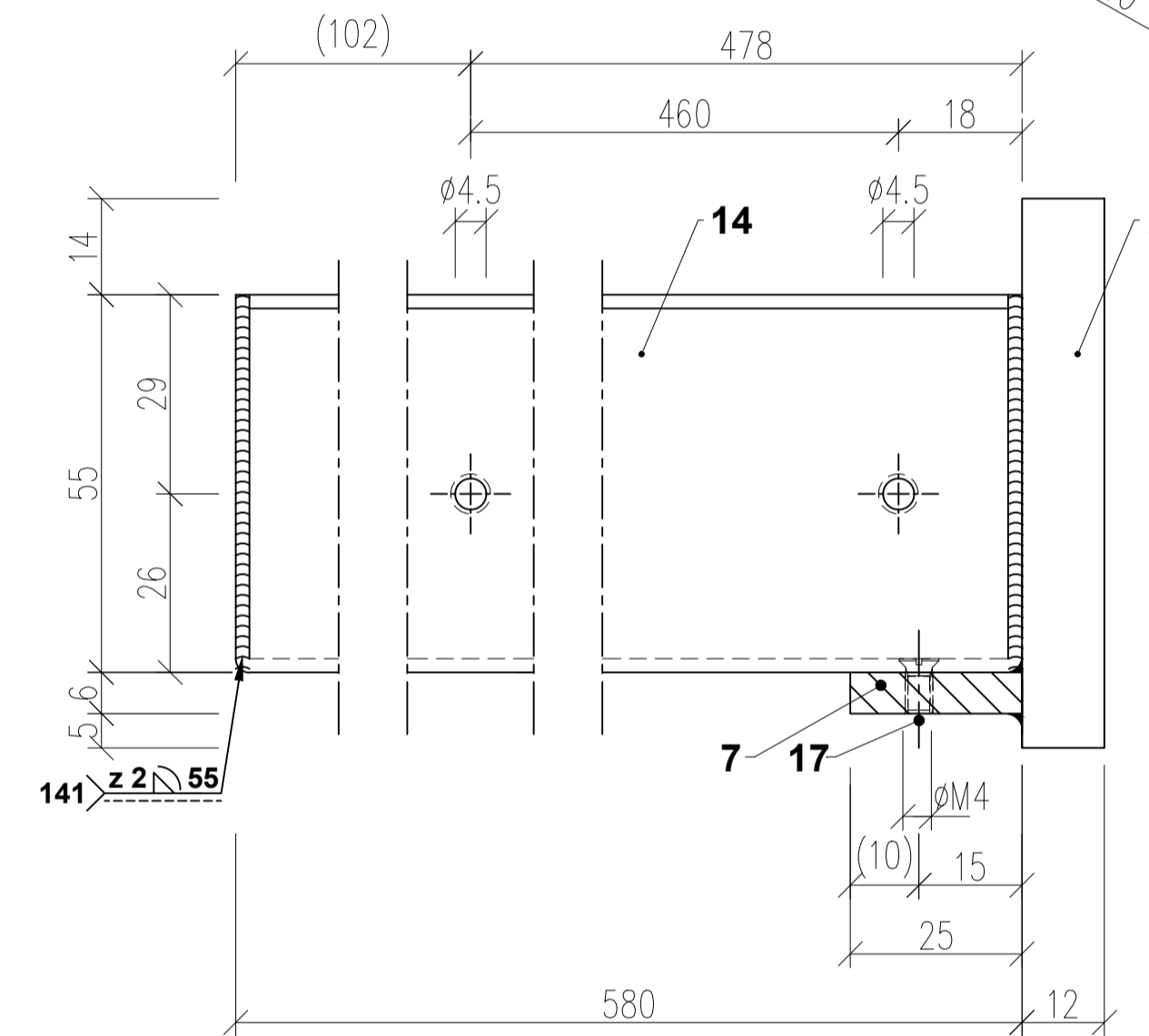
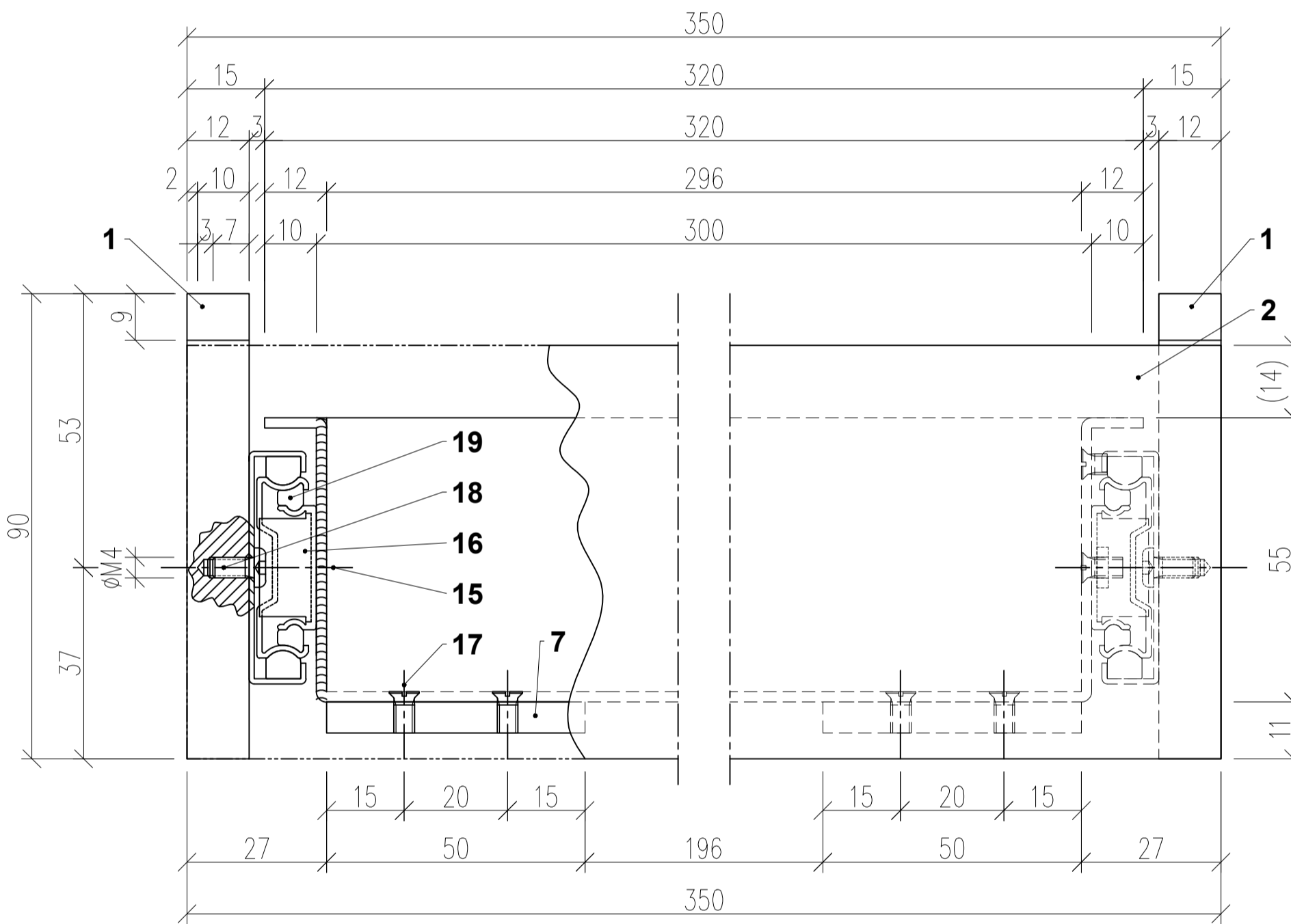
Tischvitrine Ansicht M 1:5 / Vitrine de table, vues éch. 1:5 / Tavolo vetrina prospetto scala 1:5



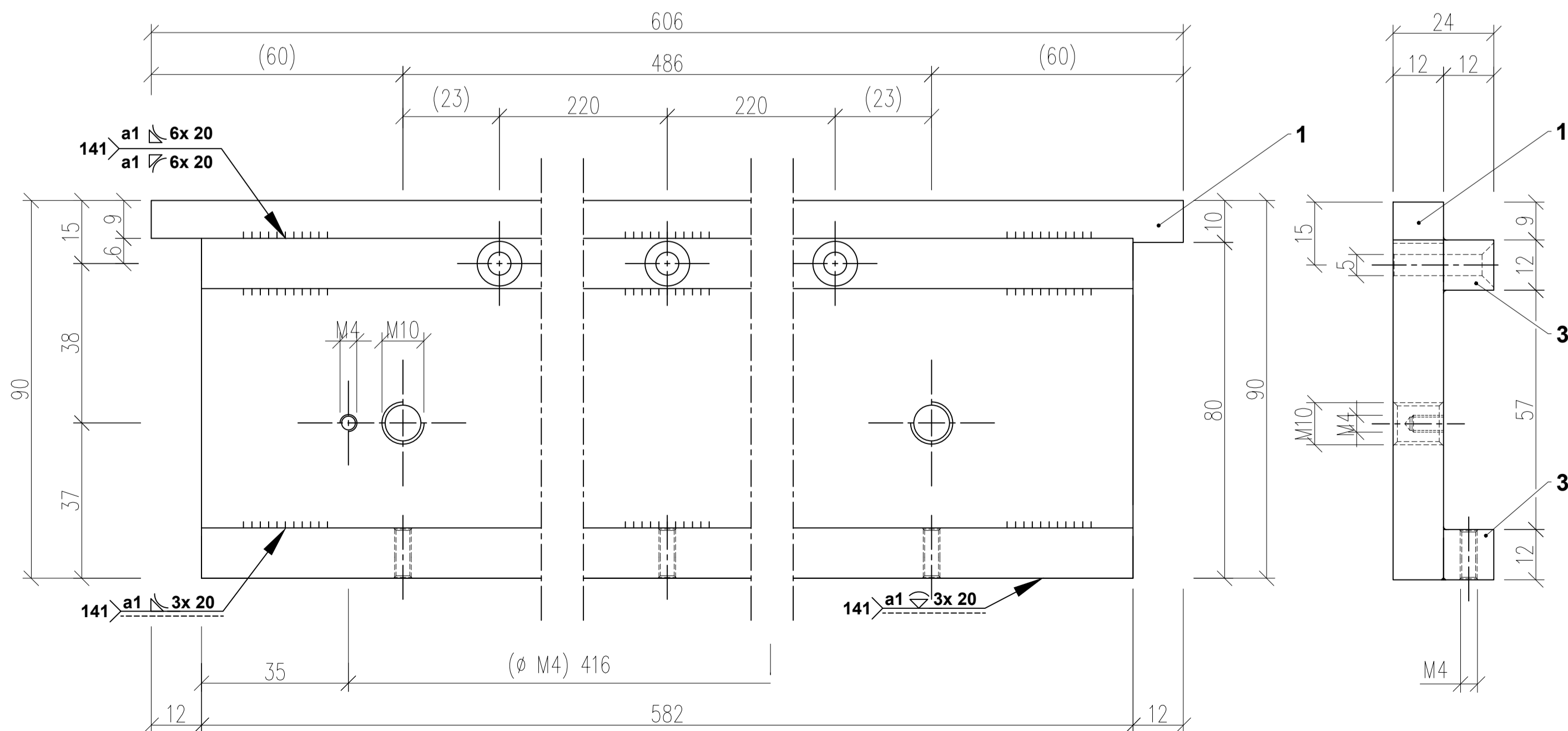
Schmiedeteil M 1:1 / Pied forgé éch. 1:1 / pezzo forgiato sala 1:1



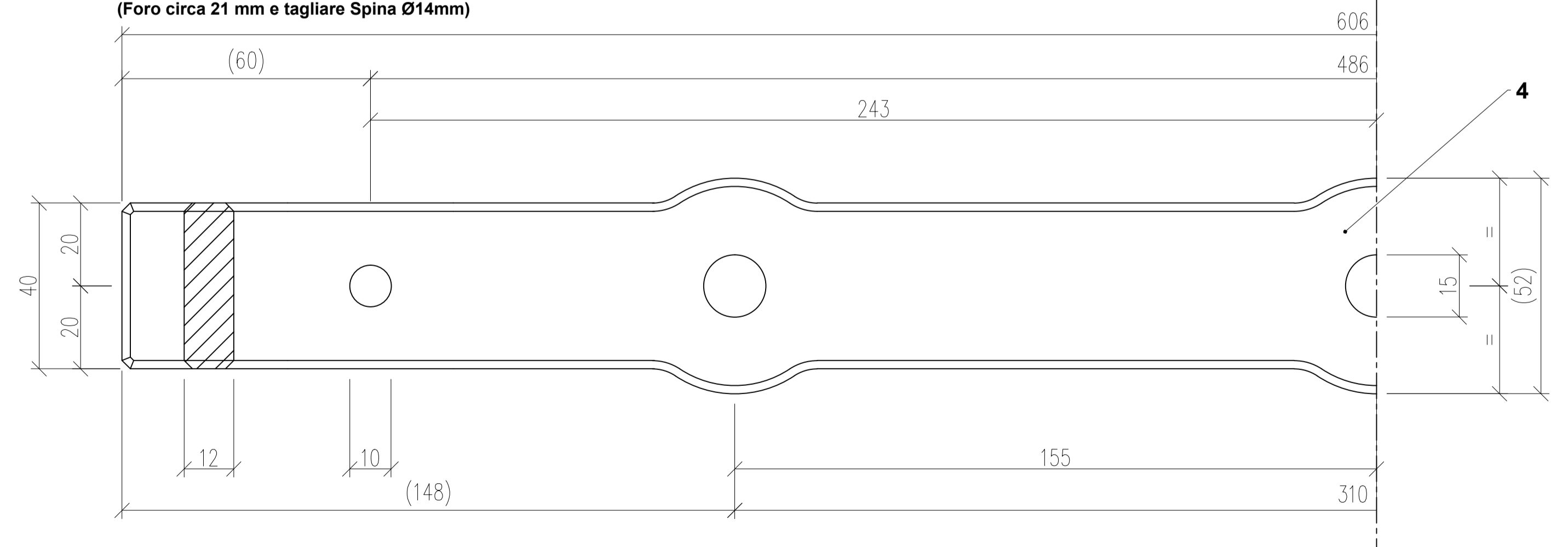
Detail Auszug M 1:1 / Détail tiroir éch. 1:1 / Dettaglio bacinella scala 1:1



Detail Zarge L&R M 1:1 / Détail encadrement G&D éch. 1:1 / Dettaglio telaio S&D scala 1:1



Schmiedeteil L&R M 1:1 / Traverse forgée éch. 1:1 / pezzo forgiato scala 1:1
(Lochung Spalten ca. 21 mm und Stauchen Dorn Ø14mm)
(percement, fendre env. 21mm et refouler (poinçon Ø14mm))
(Foro circa 21 mm e tagliare Spina Ø14mm)



Lehrberuf: Profession:	Übungsaufgabe QV METALLBAUER EFZ Exercice EFA Constructeur métallique Esercizio PQ Metalcostruttore	Zeichn.No. MBSCH 12 Plan 01
Fach:	Praktische Arbeit Fachrichtung Schmiedearbeiten Travaux spécifiques, orientation travaux de forge Lavoro pratico forgiatura	Msk. Ech. 1:2 1:1 1:5
Branche:		Dev. Date PG 2011/12
Aufgabe:	Tischvitrine mit Schmiedeeisenfüßen Vitrine de table avec pieds forgés Tavolo vetrina con gambe forgate	Gepr. Controll. Date BL
Devolr:		Gepr. Controll. Date PG
Metallbau Schweizerische Metall-Union Construction métallique Union Suisse du Métal Metalcostruzioni Unione Svizzera del Metallo		ÜQV 2014